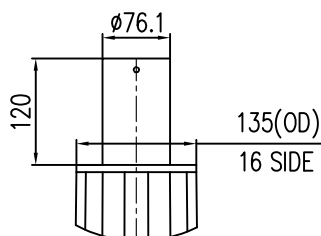
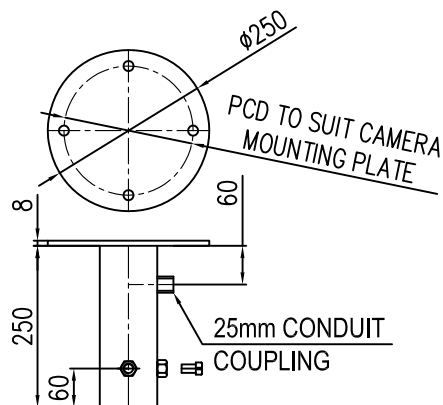


APPLICATION INFORMATION		
MAX SAIL AREA (m <sup>2</sup> )	MAX TOP WEIGHT(KG)	DEFLECTION*(mm)
0.20	30	10

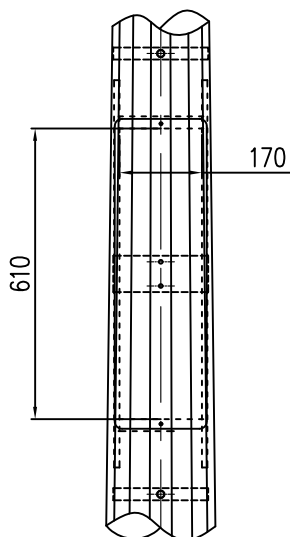
\*TOP POLE DEFLECTIONS HAVE BEEN CALCULATED USING DESIGN WIND SPEED OF 27.8m/s(100km/hr)



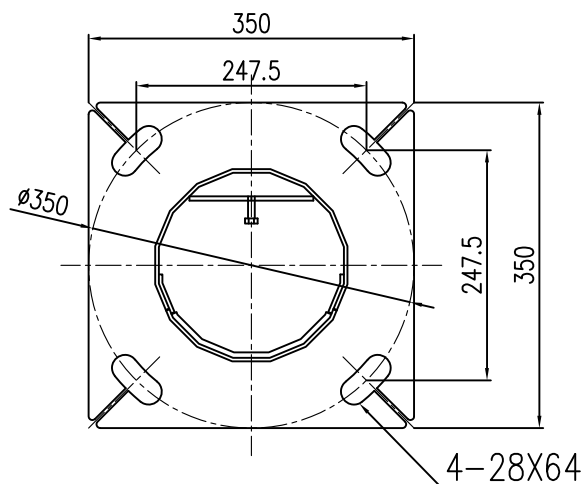
SPIGOT DETAIL



CAMERA MOUNTING ADAPTOR FOR CTV RANGE




DOOR DETAIL



BASEPLATE FOR 4M24@350 PCD RAGBOLTS

**NOTES:**

- 1.POLES DESIGNED IN ACCORDANCE WITH BCA, AS4100:1998, AS/NZS 1170.2 2002, AS 1798:1992, AS/NZS 4676:2000, AS/NZS 4677:2000.
- 2.HOT ROLLED STEEL FLAT PRODUCTS TO CONFORM TO AS 1594
- 3.HOT ROLLED STEEL BARS AND SECTIONS TO CONFORM TO AS 3679
- 4.WELDING OF STEEL STRUCTURES TO CONFORM TO AS/NZS 1554.1:2004
- 5.ALL STEEL ITEMS TO BE FULLY HOT DIP GALVANISED AFTER FABRICATION TO AS/NZS 4680:1994.
- 6.HOT ROLLED STEEL PLATES TO CONFORM TO AS3678.
7. ALL DIMENSION ARE IN MILLIMETRES

Customer/Project	Catalogue.no	 5 Rose St, CAMPBELLTOWN NSW, 2560. PH: (02)4627 6500 FAX: (02)4627 6533 EMAIL: Eng@ipoles.com.au
Title	CC-6-76	
LAST UPDATED	12/07/12	
Drawn by	LQ	drg. no.
Checked by	J.Zheng	