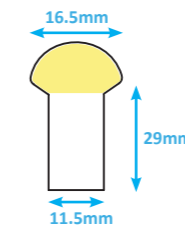




neonflex DOME

| LED Colour | Cut Increment | Wattage | Max Length | Jacket Option |
|------------|---------------|----------|------------|-----------------|
| 2700k | 83.3mm | 12w/mtr | 10mtr | White |
| 3000k | 83.3mm | 12w/mtr | 10mtr | White |
| 4000k | 83.3mm | 12w/mtr | 10mtr | White |
| 5000k | 83.3mm | 12w/mtr | 10mtr | White |
| RGB | 100mm | 12w/mtr | 10mtr | White |
| RGBW | 100mm | 15w/mtr | 5mtr | White |
| RGBWW | 100mm | 15w/mtr | 5mtr | White |
| RED | 125mm | 7.2w/mtr | 15mtr | Red or White |
| GREEN | 83.3mm | 12w/mtr | 10mtr | Green or White |
| BLUE | 83.3mm | 12w/mtr | 10mtr | Blue or White |
| AMBER | 125mm | 7.2w/mtr | 15mtr | Amber or White |
| ORANGE | 83.3mm | 12w/mtr | 10mtr | Yellow or White |

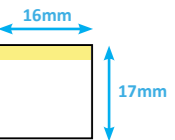
LED Beam 320° Beam
Bend 120mm Diameter
Bend Direction Horizontal Bend
Lumens Max 340lm/mtr
Weight 0.49kg/mtr
Mounting Channel 35mm or 1000mm long
 26 x 16.5mm 'U' Shape



neonflex SQL

| LED Colour | Cut Increment | Wattage | Max Length | Jacket Option |
|------------|---------------|----------|------------|----------------|
| 2700k | 55.6mm | 12w/mtr | 10mtr | White |
| 3000k | 55.6mm | 12w/mtr | 10mtr | White |
| 4000k | 55.6mm | 12w/mtr | 10mtr | White |
| RGB (VB) | 83.3mm | 12w/mtr | 7mtr | White |
| RED | 83.3mm | 7.2w/mtr | 15mtr | Red or White |
| GREEN | 55.6mm | 12w/mtr | 10mtr | Green or White |
| BLUE | 55.6mm | 12w/mtr | 10mtr | Blue or White |
| AMBER | 83.6mm | 7.2w/mtr | 15mtr | Amber or White |

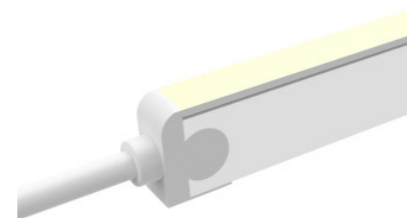
LED Beam 160° Beam
Bend 300mm Diameter
Bend Direction Horizontal & Vertical Bend
Lumens Max 400lm/mtr
Weight 0.325kg/mtr
Mounting Channel 35mm or 1000mm long
 22.5 x 21mm 'U' Shape



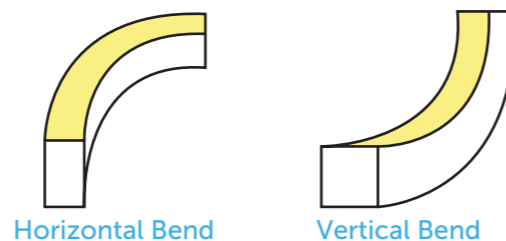
24v D.C. Input
 5Year Warranty
 .IES Online
 IP67 IP Rating

NEONFLEX

- IP Rating** IP67
- Mounting** Comes with the option of 35mm or 1000mm anodised aluminium profile for installation.
- LED Type** SMD LED Chips
- Dimming** 0-10v or DALI dimming options available. Colour control and decoder available.
- Finish** PVC Jacket with UV resistant opal blend fill
- Construction** Flexible white FPCB with rolled copper for long life. This product is designed so it doesn't have to be mounted to a heatsink. IP67 rated strips come with a high quality UV & flame resistant PVC body.
- Ambient Temp** -40° to 55° Celsius
- Tail Feed** All fittings come with injection-moulded tail feed making a quality IP seal at power feed end. All fittings come with side, bottom or end tail feed.
- Protection** IK08



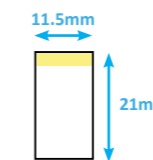
Injection-Moulding



neonflex EDGE

| LED Colour | Cut Increment | Wattage | Max Length | Jacket Option |
|------------|---------------|----------|------------|----------------|
| 2700k | 83.3mm | 12w/mtr | 10mtr | White |
| 3000k | 83.3mm | 12w/mtr | 10mtr | White |
| 4000k | 83.3mm | 12w/mtr | 10mtr | White |
| 5000k | 83.3mm | 12w/mtr | 10mtr | White |
| RGB (HB) | 100mm | 12w/mtr | 10mtr | White |
| RGBW | 100mm | 15w/mtr | 5mtr | White |
| RGBWW | 100mm | 15w/mtr | 5mtr | White |
| RED | 125mm | 7.2w/mtr | 15mtr | Red or White |
| GREEN | 83.3mm | 12w/mtr | 10mtr | Green or White |
| BLUE | 83.3mm | 12w/mtr | 10mtr | Blue or White |
| AMBER | 125mm | 7.2w/mtr | 15mtr | Amber or White |

LED Beam 160° Beam
Bend 120mm Diameter
Bend Direction Horizontal Bend
Lumens Max 280lm/mtr
Weight 0.325kg/mtr
Mounting Channel 35mm or 1000mm long
 26 x 16.5mm 'U' Shape



neonflex SQ

| LED Colour | Cut Increment | Wattage | Max Length | Jacket Option |
|------------|---------------|----------|------------|---------------|
| 2700k | 83.3mm | 4.5w/mtr | 10mtr | White |
| 3000k | 83.3mm | 4.5w/mtr | 10mtr | White |
| 4000k | 83.3mm | 4.5w/mtr | 10mtr | White |
| 5000k | 83.3mm | 4.5w/mtr | 10mtr | White |
| RED | 83.3mm | 4.5w/mtr | 10mtr | White |
| GREEN | 83.3mm | 4.5w/mtr | 10mtr | White |
| BLUE | 83.3mm | 4.5w/mtr | 10mtr | White |
| AMBER | 83.3mm | 4.5w/mtr | 10mtr | White |

LED Beam 160° Beam
Bend 100mm Diameter
Bend Direction Horizontal & Vertical Bend
Lumens Max 200lm/mtr
Weight 0.14kg/mtr
Mounting Channel 35mm or 1000mm long
 15 x 14mm 'U' Shape

